



United States
Department of
Agriculture

Farm
Service
Agency

Routt-Jackson-Grand-Summit FSA Office
1475 Pine Grove Road, Suite 201A
Steamboat Springs, CO 80487
Ph: 970 879-3225
Fax: 970 879-2517

NOVEMBER 17, 2006

Dear Producer,

Your Routt, Jackson, Grand*Summit FSA office is currently creating a new set of computer-generated maps for each farm. In the process, we are measuring each field that may result in changes in acreage for some fields. We recognize the methods used to determine acres in the past were not as accurate as legal surveys. We know, however, the acres were close and did meet the needs of USDA programs. Our tests have shown that the acreage calculations using computer software are equal to or slightly more accurate than methods we have used in the past.

The process of converting to a new system will eventually allow for online services. This means that producers who wish to do so, may one day be able to make acreage reports or complete program applications from their own home on a personal computer (PC). One component of this conversion involves computer-generated maps.

The process of converting to a GIS-based mapping system requires that FSA contact owners and operators to ensure that the field boundaries are in the right location. Please review the field boundaries on the enclosed map(s) for accuracy. If you identify fields that appear to be incorrectly placed on the map(s), please let the Routt, Jackson, Grand*Summit County FSA Office know within 30 calendar days from the date of this letter so that we can make any appropriate corrections. If the Routt, Jackson, Grand*Summit County Office does not agree with all of the requested changes to the map(s), you will receive a second letter informing you of appeal rights to COC.


If we do not hear from you within 30 calendar days from the date of this letter, we will consider the field boundary information correct and use it for future USDA/FSA program purposes. Please note that the maps are intended for FSA program purposes only.

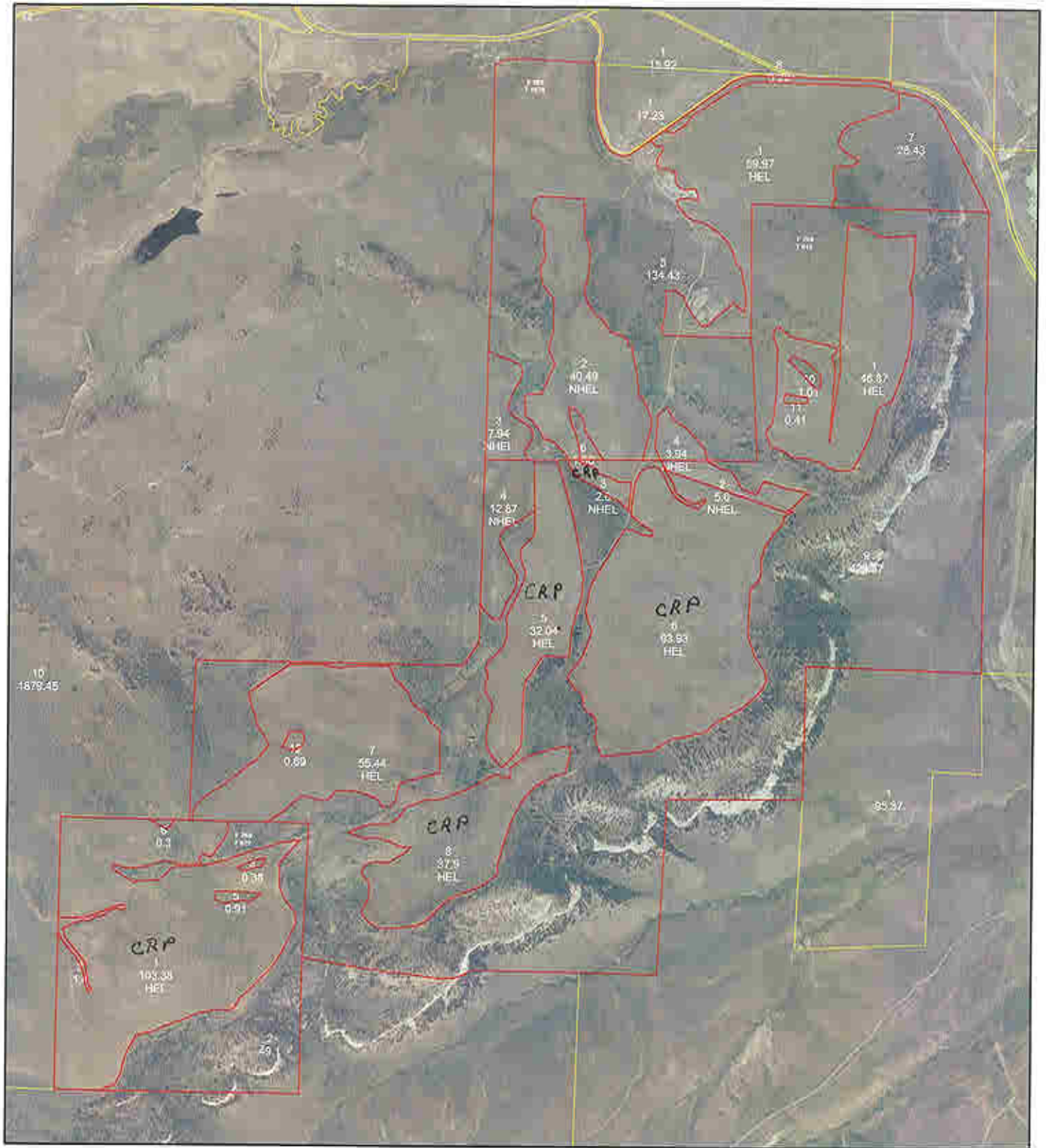
In closing, we appreciate your cooperation in this matter and hope that our new mapping system will provide better service to you.

The U.S. Department of Agriculture (USDA) prohibits discrimination in all its programs and activities on the basis of race, color, national origin, sex, religion, age, disability, political beliefs, sexual orientation, marital or family status, reprisal, and public assistance status. (Not all prohibited bases apply to all programs.) Persons with disabilities who require alternative means for communication of program information (Braille, large print, audiotape, etc.) should contact USDA's TARGET Center at (202) 720-2600 (voice and TDD). To file a complaint of discrimination, write to USDA, Director, Office of Civil Rights, Room 326W, Whitten Building, 1400 Independence Avenue, SW., Washington, DC 20250-9410 or call (202) 720-5964 (voice and TDD). USDA is an equal opportunity provider and employer.

Sincerely,

A handwritten signature in black ink that reads "Leon Padia". The signature is written in a cursive style.

 Leon Padia
County Executive Director



United States Department of Agriculture
Farm Service Agency

Grid:

2005 Orthophotography Not to Scale

1:16,561

October 16, 2006

ROUTT COUNTY

