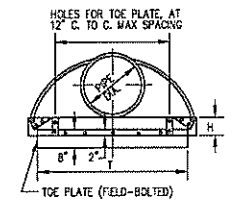
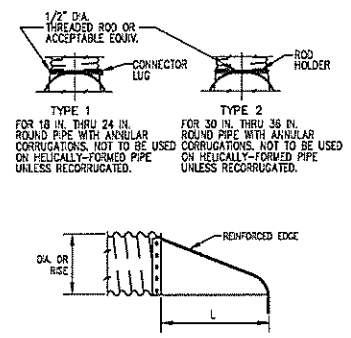
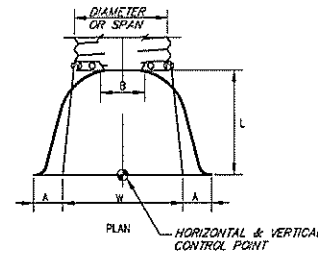
  
 CALL UTILITY NOTIFICATION  
 CENTER OF COLORADO  
**1-800-922-1987**  
 CALL 2 BUSINESS DAYS IN ADVANCE  
 BEFORE YOU DIG, GRADE OR EXCAVATE  
 FOR THE MARKING OF UNDERGROUND  
 MEMBER UTILITIES.

**METAL END SECTION NOTES**

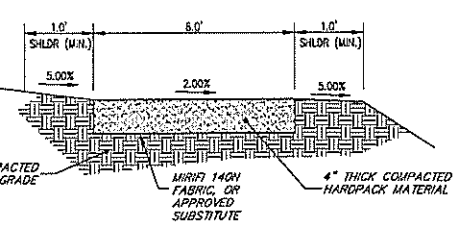
- DIMENSIONS OF END SECTIONS MAY VARY SLIGHTLY FROM THOSE SHOWN ON THE TABLES DUE TO DIFFERENT MANUFACTURER'S VARIATIONS.
- END SECTIONS FOR CMP ARCH CULVERT SHALL MATCH THE DIMENSIONS OF THE CULVERT SHOWN ON THE PLANS.
- GALVANIZED TOE PLATE, AS SHOWN, REQUIRED ON END SECTIONS FOR ALL THIN WALL PIPE AND SHALL BE THE SAME THICKNESS AS END SECTIONS. TOE PLATE SHALL BE FIELD-BOLTED TO END SECTION WITH 3/8" GALVANIZED BOLTS, NUTS AND WASHERS.
- GALVANIZED STEEL SHALL BE IN CONFORMANCE WITH AASHTO M 111, M 216 OR M 232.

**THIN-WALL ROUND PIPE**

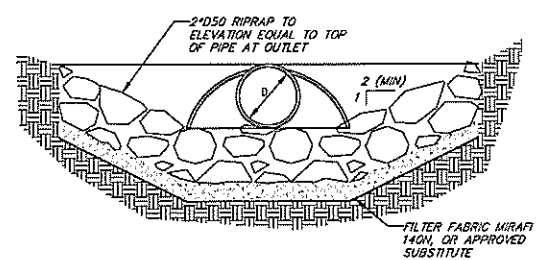
PIPE DIA.	THICK.	DIMENSIONS (inches)					
		A	B	H	L	W	T
12	0.084	6	6	6	21	24	34
18	0.084	8	10	8	31	36	46
24	0.084	10	12	8	36	42	52
30	0.079	12	16	8	51	60	70
36	0.079	14	19	9	60	72	84
42	0.109	16	22	11	69	84	100
48	0.109	18	27	12	78	90	112
54	0.109	18	30	12	84	102	124
60	0.109	18	33	12	87	114	136
66	0.109	18	36	12	87	120	142
72	0.109	18	39	12	87	126	148
78	0.109	18	42	12	87	138	160
84	0.109	18	42	12	87	138	160



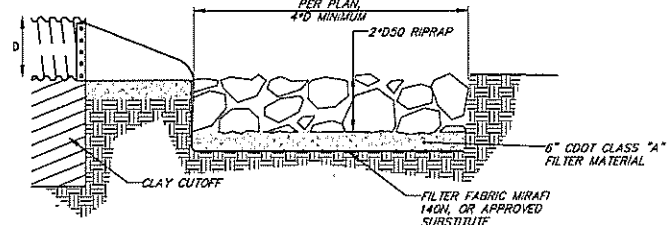
END SECTION AND CONNECTION DETAILS FOR THIN WALL PIPE CULVERTS



SOFT SURFACE TRAIL



TYPICAL RIPRAP DETAILS



NOTE: A 4-INCH LAYER OF SAND MAY BE USED IN PLACE OF THE FILTER FABRIC.

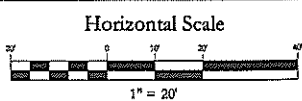
1	7/12/07	TAC COMMENTS	ME
NO	DATE	REVISIONS	INT

Christensen Custom Building  
Steamboat Springs, CO

**Grading, Drainage,  
& Utility Plan**

DATE: 6-1-07 DCN. BY: MCE  
 JOB NO. 2024-001 DWN. BY: MCE  
 DWG. NO. 2024-001 GD SURV. BY: LCI

Contour Interval = N/A



141 9th Street, P.O. Box 774943  
 Steamboat Springs, Colorado 80477  
 Phone (970) 871-9494 Fax (970) 871-9299  
 www.LANDMARK-CO.com