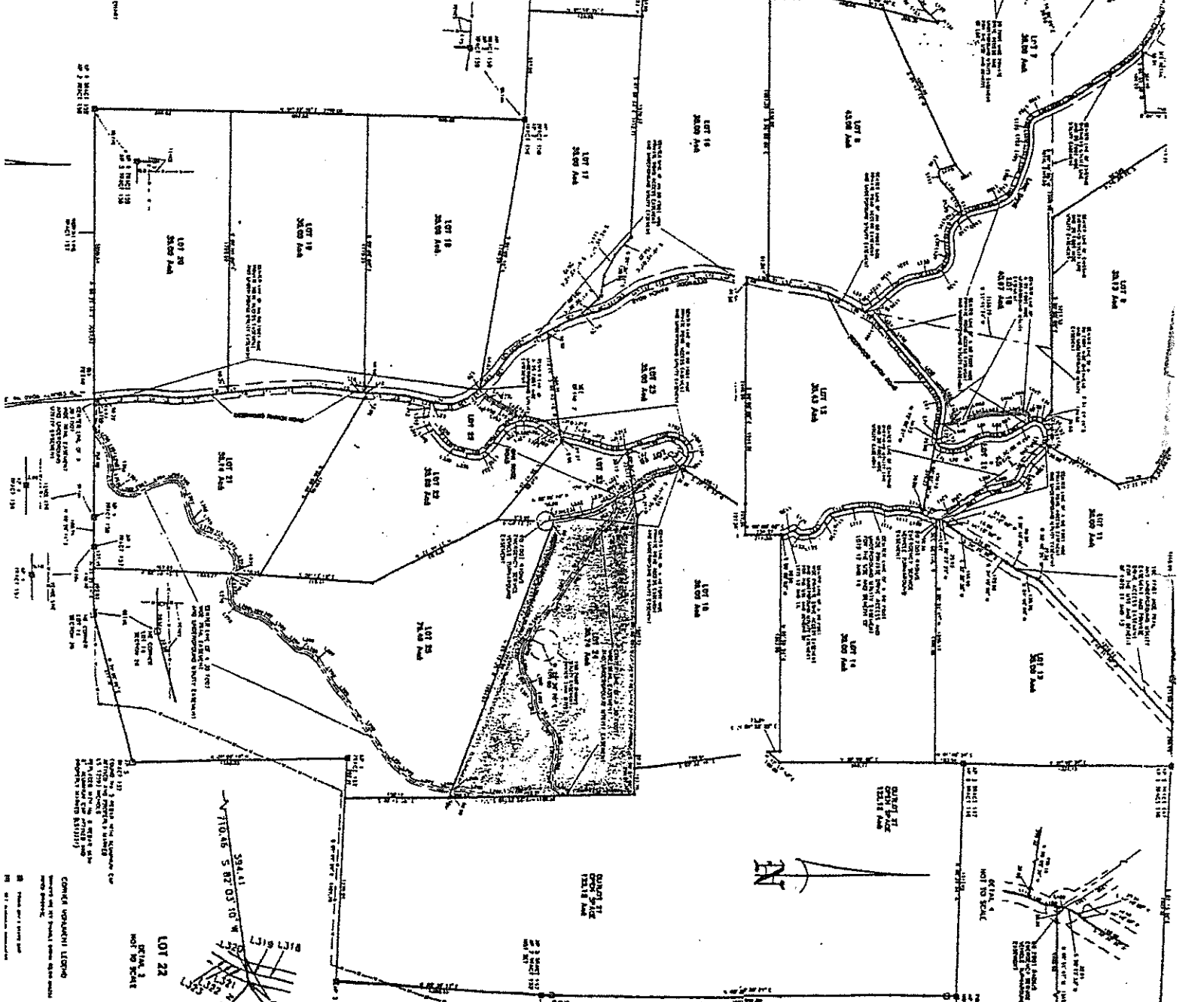


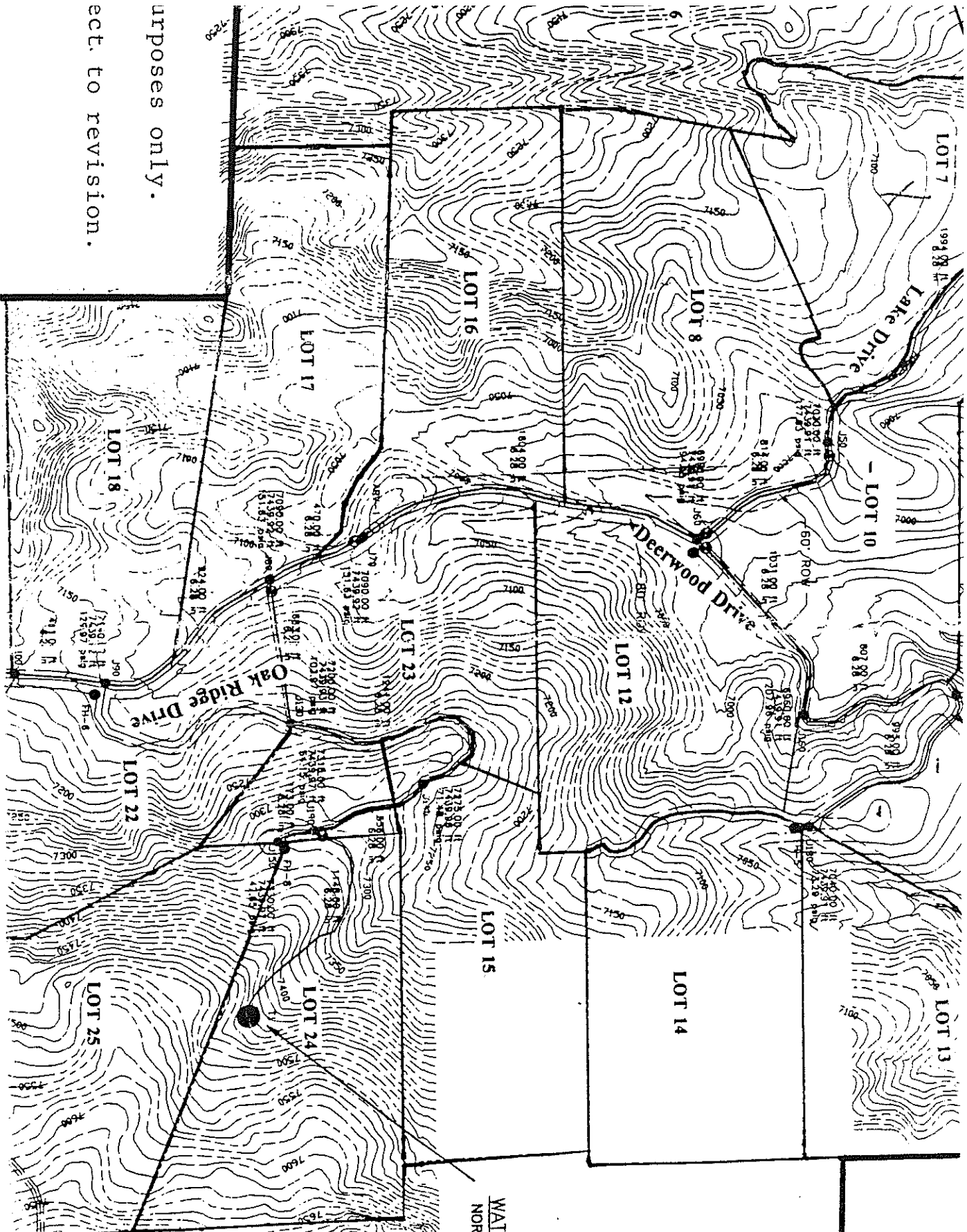
THIS PLAN IS SUBJECT TO THE FOLLOWING CONDITIONS:
 1. THE PROPERTY IS TO BE USED FOR THE PURPOSES SET FORTH IN THE ZONING ORDINANCE.
 2. THE PROPERTY IS TO BE USED IN ACCORDANCE WITH THE SUBDIVISION MAP.
 3. THE PROPERTY IS TO BE USED IN ACCORDANCE WITH THE DEED RECORDS.

D & D, Inc.
 ENGINEERS, ARCHITECTS & PLANNERS
 P. O. Box 1000, Springfield, Mass. 01103
 PROJECT NO. 2100-1
 DRAWING NO. 11/27/78-10

LINE TABLE FOR ACCESS CONSTRAINTS

LINE NO.	DESCRIPTION	START POINT	END POINT	CONSTRAINT
1
2
3
4
5
6
7
8
9
10
11
12
13
14
15
16
17
18
19
20
21
22
23
24
25
26
27
28
29
30
31
32
33
34
35
36
37
38
39
40
41
42
43
44
45
46
47
48
49
50
51
52
53
54
55
56
57
58
59
60
61
62
63
64
65
66
67
68
69
70
71
72
73
74
75
76
77
78
79
80
81
82
83
84
85
86
87
88
89
90
91
92
93
94
95
96
97
98
99
100





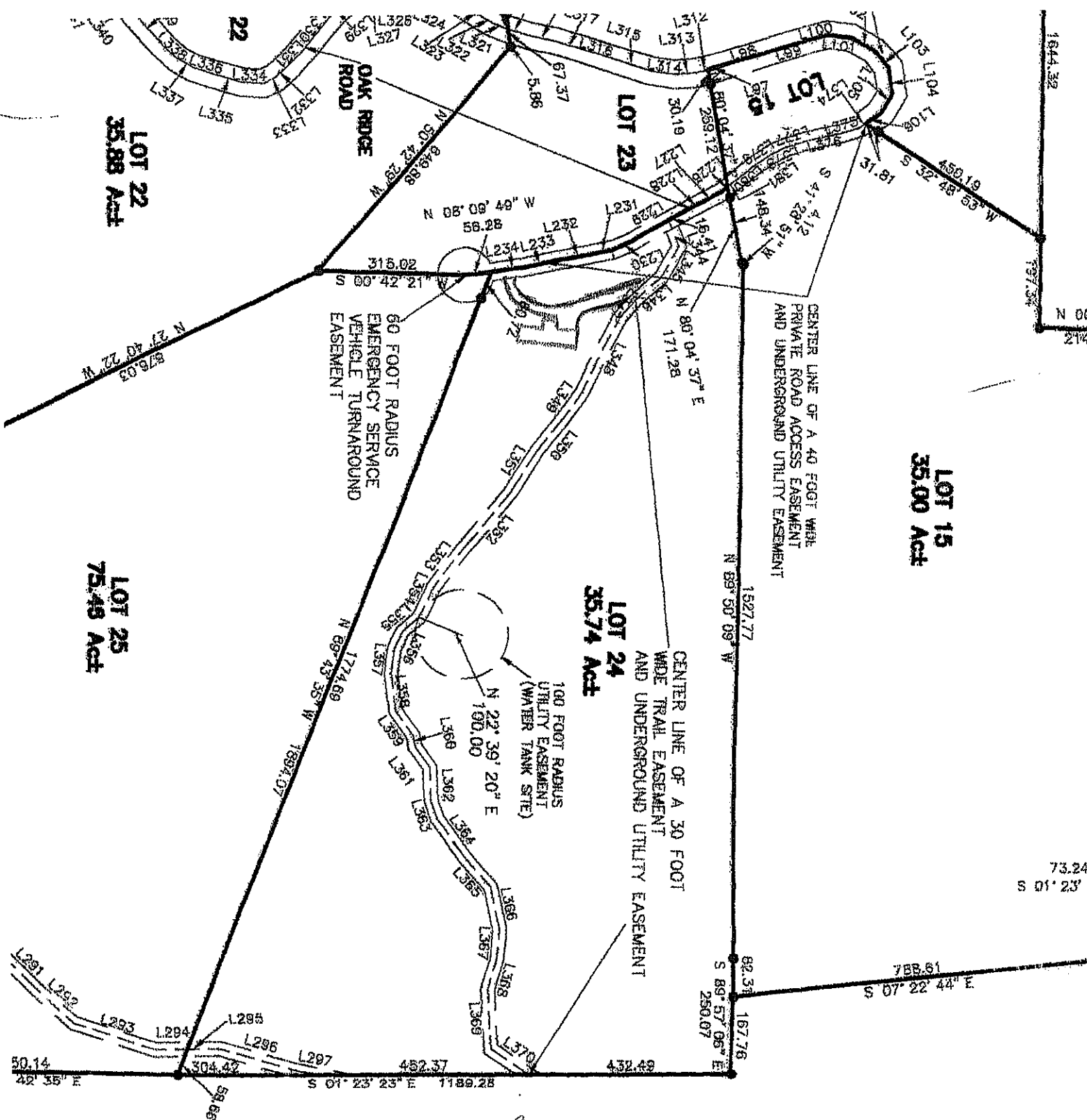
2

purposes only.
ect. to revision.

WATER STORAGE TANK 1
NORMAL WATER EL. = 7440

OPEN SPACE
DULUIT 27
OPEN SPACE
122.99 AC ±

OPEN SPA



LOT 22
35.88 Aca

LOT 23

LOT 15

LOT 15
35.00 Aca

LOT 24
35.74 Aca

LOT 25
75.48 Aca

60 FOOT RADIUS
EMERGENCY SERVICE
VEHICLE TURNAROUND
EASEMENT

100 FOOT RADIUS
UTILITY EASEMENT
(WATER TANK SITE)

CENTER LINE OF A 30 FOOT
WIDE TRAIL EASEMENT
AND UNDERGROUND UTILITY EASEMENT

CENTER LINE OF A 40 FOOT WIDE
PRIVATE ROAD ACCESS EASEMENT
AND UNDERGROUND UTILITY EASEMENT

281
3683
CROSSING
207 3048
Tom
800 598 5853

73.24
S 01° 23'

788.61
S 07° 22' 44" E

50.14
42° 35' E
504.42
S 01° 23' 23" E
1189.28
452.37
432.49

82.31
167.76
S 89° 57' 06" E
250.07

1527.77
N 89° 50' 09" W

171.28
N 80° 04' 37" E

58.28
N 08° 08' 49" W

315.02
S 00° 42' 21"

876.03
N 27° 40' 22" W

1844.32
N 10° 12'

197.32
N 10° 12'

450.19
S 32° 48' 53" W

186
189
189

1312
1313
1314
1315

67.37
5.86

L326
L327
L328
L329
L330
L331
L332
L333
L334
L335
L336
L337

OAK RIDGE
ROAD

L100
L101
L102
L103
L104
L105

L291
L292
L293
L294
L295
L296
L297

L369
L368
L367
L366
L365
L364
L363
L362
L361

N 22° 39' 20" E
190.00

N 89° 43' 35" W
1894.07

1774.69
N 89° 43' 35" W

1774.69
N 89° 43' 35" W

1774.69
N 89° 43' 35" W

1774.69
N 89° 43' 35" W

1774.69
N 89° 43' 35" W

1774.69
N 89° 43' 35" W

1774.69
N 89° 43' 35" W

1774.69
N 89° 43' 35" W